



## End-to-End Connectivity

Be in control of your network...

End to End Networks provides a fully integrated IT Networking and Security solutions portfolio. We deliver dependable data and voice infrastructure services, including consulting, design, national deployment and 24/7 live technical support services. With a diverse portfolio of connectivity options, End to End Networks is the perfect partner to help you expand your competitive advantage.

We are your single point of contact for all your network connectivity issues, taking ownership of problems to resolution. With End to End Networks, you have a partner who is dependable, accountable and always available.

## Your Dedicated Network

With sophisticated networks and growing bandwidth requirements, you need a trusted network provider, not just a vendor.

End to End Networks can help you design and build a comprehensive, scalable network solution that meets your specific business connectivity needs, timelines and demands.

Reliable connectivity between business headquarters and remote branch locations is essential for the continuous and effective operation of mission critical applications, such as: email, CRM, ERP, Intranet and distributed databases.

The challenge is to manage, secure and optimize end-to-end link traffic from headquarters all the way to remote locations ensuring the continuity of applications while controlling connectivity costs.

## How much is business downtime costing you?

How are you driving revenue and productivity when you don't have access to business critical applications within your organization?

Link failures, security breaches and service overloads translate into failed transactions and denied user access undermining the productivity of your applications.

Our End to End Network broadband service provides a high-end private and internet solution to help power your business communications, online applications, and special services such as video and voice conferencing, closed circuit video cameras and digital signage.

## Our Approach

It starts with your business. We understand that service interruptions are costly and disruptive to your bottom-line. Our network is built on the best industry carrier environments. End to End Networks is one of Canada's largest, independent interconnects.

With over twenty years of industry experience, we combine rigorous project management with the best people, processes and tools. Our wealth of experience means we deliver on time, minimize risk and business impact that ensures a quality result.

**People:** Your dedicated account team is focused to understand your business and is committed to building strong partnerships with you. Our Project Manager's expertise across many technologies is complemented by their certifications, experience and attention to detail.

**Processes:** End to End Networks Business Practice ensures consistent high levels of project delivery. From developing, documenting and communicating the plan to our customers, we conduct regular progress reviews to prevent potential risks and problems.

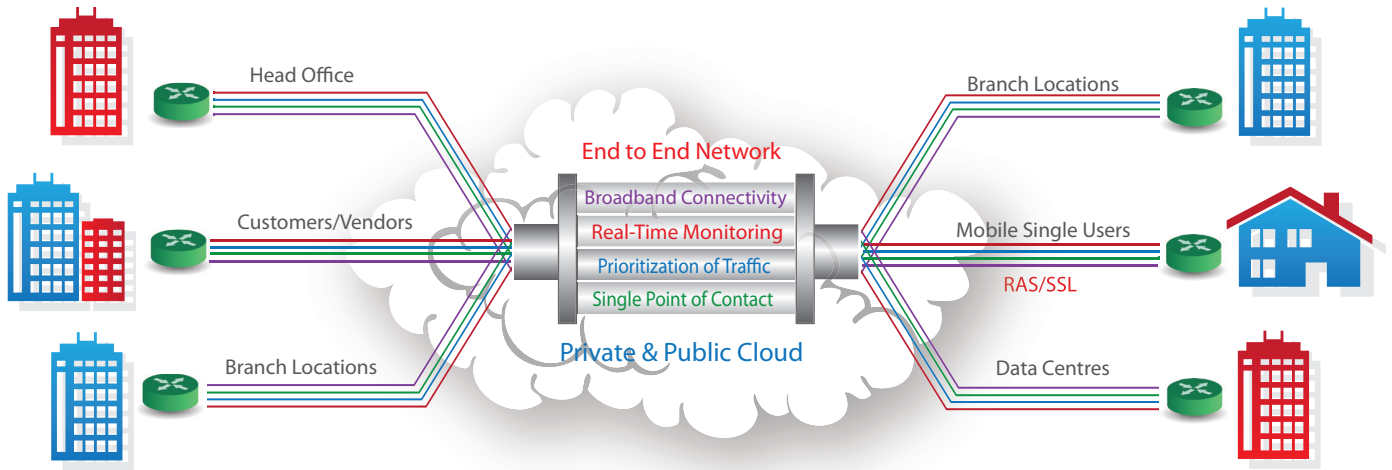
**Tools & Technology:** End to End Networks monitors and manages your network through eView™, our secure proprietary customer portal. eView™ is a complete comprehensive toolset that allows full visibility into your network infrastructure to improve your day to day operations.

## Network Connectivity Solutions






End to End Dedicated Internet Network	End to End Dedicated Private Network	Managed Services	Professional Services
Business DSL	Business DSL	24/7 Proactive Monitoring	Network Assessment
Cable	Cable	Bilingual Live Technical Support	Network Architecture and Design
Wireless	T1	Real-Time & Historical Reporting	Network Integration and Deployment
T1	E10/E100	Customized Escalation Procedures	Network Monitoring
E10 Fiber	■ EPL	Asset Management	Network Support
E100 Fiber	■ EVPL	Live Network Map	Network Optimization
	■ EoC		

*Network Performance : Data, Voice and Video*

# Network Architecture - Connecting Your Business



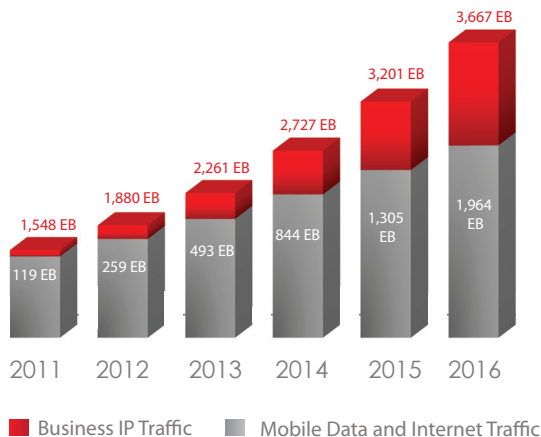
## Benefits

-  **Reliable Performance** - Delivering optimal uptime for your business critical applications, backed by 24/7 live network monitoring and support.
-  **Optimize your Interconnection Costs** - Prioritize your data, voice and video services - on a plan that supports your budget with customizable programs available.
-  **Transport Sensitive Data Securely** - The Ethernet Private Line service is ideally suited for business environments that are responsible for transmitting and storing sensitive data.
-  **Expertise** - Maximizing network value by utilizing next generation technology that enables you to improve service to your existing customers and gain a competitive advantage.
-  **Flexibility** - We offer full range networking options to meet your connectivity needs: point-to-point, point-to-multipoint, Ethernet, MPLS.

## Features and Functionality

- End-to-End National Coverage
- Simple product selection with flexible bandwidth, interface and architectural options
- 24/7 Bilingual Network Support Centre (NSC)
- Simplified billing without confusing bundling options
- ITIL Certified

Business IP Traffic & Mobile Data and Internet Traffic 2011-2016



Businesses will exceed 3,667 exabytes internet traffic monthly by 2016

Monthly global mobile data traffic will surpass 10 exabytes in 2016

Mobile data traffic includes handset-based data traffic, such as text messaging, multimedia messaging, and handset video services. Mobile Internet traffic is generated by wireless cards for portable computers and handset-based mobile Internet usage. *Source: Cisco 2012*

## Delivering Value

With a single point of accountability, professional expertise, and proven customer support experience, we are committed to delivering complete customizable network solutions. End to End Networks helps businesses manage their corporate network infrastructure efficiently while mitigating risks and downtime to increase their business value through technology.

End to End Networks has experience in all major industries, providing clients with a partner that is not only an expert in IT, but an expert in their industry. This combination of technology business knowledge allows us to assist our customers to adapt as their industries change and maintain their competitive position.

With a vast expertise in verticals like financial, logistics, retail, healthcare, government and hospitality, our technology advisors are ready to serve you and your business requirements. We focus on understanding your industry needs to improve efficiency, maximize your communications and IT payback.



NETWORK PERFORMANCE  
FROM END-TO-END



### CONTACT

210 Cochrane Drive, Unit 1,  
Markham, ON L3R 8E6  
Toll Free: 1-877-END-2-END  
sales@endtoend.com  
www.endtoend.com